

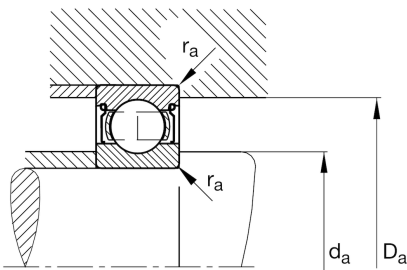
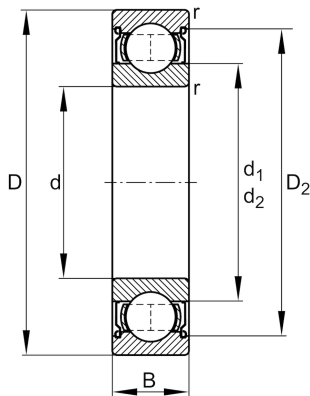
FAG

6216-2Z

Deep groove ball bearing

Schaeffler ID:
0167213900000Deep groove ball bearing 62...-2Z, single
row, shields, steel sheet metal cage

Technical information

**Main Dimensions & Performance Data**

d	80 mm	Bore diameter
D	140 mm	Outside diameter
B	26 mm	Width
C_r	77.000 N	Basic dynamic load rating, radial
C_{0r}	55.000 N	Basic static load rating, radial
C_{ur}	3.650 N	Fatigue load limit, radial
n_G	6.200 1/min	Limiting speed
n_{gr}	5.500 1/min	Reference speed
	1,49 kg	Weight

Dimensions

r_{min}	2 mm	Minimum chamfer dimension
D_2	124,4 mm	Caliber diameter outer ring
d_1	98,5 mm	Shoulder diameter inner ring

Mounting dimensions

d_{amin}	91 mm	Minimum diameter shaft shoulder
D_{amax}	129 mm	Maximum diameter of housing shoulder
r_{amax}	2 mm	Maximum fillet radius

Calculation factors

f_0	15	Calculation factor
-------	----	--------------------

Temperature range

T_{min}	-20 °C	Operating temperature min.
T_{max}	120 °C	Operating temperature max.